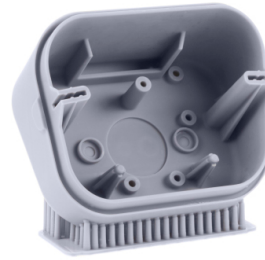
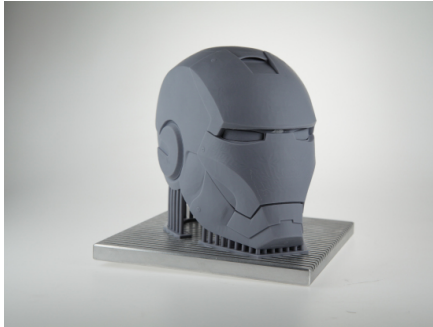


INVICTA AB002

Technical Data Sheet

TDS_EN_INVICTAAB002_102019



THE ABS-LIKE MATERIAL

INVICTA AB002 is a photosensitive material for DWS stereolithography 3D printers, designed to produce prototypes, concept models and mock up models.

The models made with INVICTA AB002 are strong and smooth: it is the ideal material to produce those parts which need high accuracy and precision.

It reproduces the same feelings of the injected ABS plastics. It is available also in white colour (INVICTA AB001).

THE INVICTA SERIES

The Invicta series includes all the materials suitable for the rapid prototyping of industrial and concept models. These materials are extremely resistant and developed in-house by DWS.

FEATURES

- Smooth Surfaces
- High Resolution
- High Accuracy

TECHNICAL FEATURES OF THE LIQUID MATERIAL

Environmental Values for Use	22°C - 27°C - max, RH 40% - 60%
Appearance / Colour	Liquid / Grey
Density	1,04 g/cm ³
Viscosity	650 ~ 950 mPa•s at 25°C

TECHNICAL CHARACTERISTICS OF THE RESIN AFTER UV CURING

Elongation at Break (%)	3 ~ 5
Surface Hardness (Shore D)	83 ~ 87
Tensile Strength (MPa)	25 ~ 45
Tensile Modulus (MPa)	1200 ~ 1950
Flexural Strength (MPa)	50 ~ 90
Flexural Modulus (MPa)	1420 ~ 2020
HDT@0,46MPa	47 ~ 51
Application / Use	Functional Prototypes

Technical specification subject to change without notice.

DWS srl

Via della Meccanica 21 - 36016 Thiene (VI) - Italy

T: +39 0445 810810 - E: info@dwssystem.com - I: www.dwssystem.com

